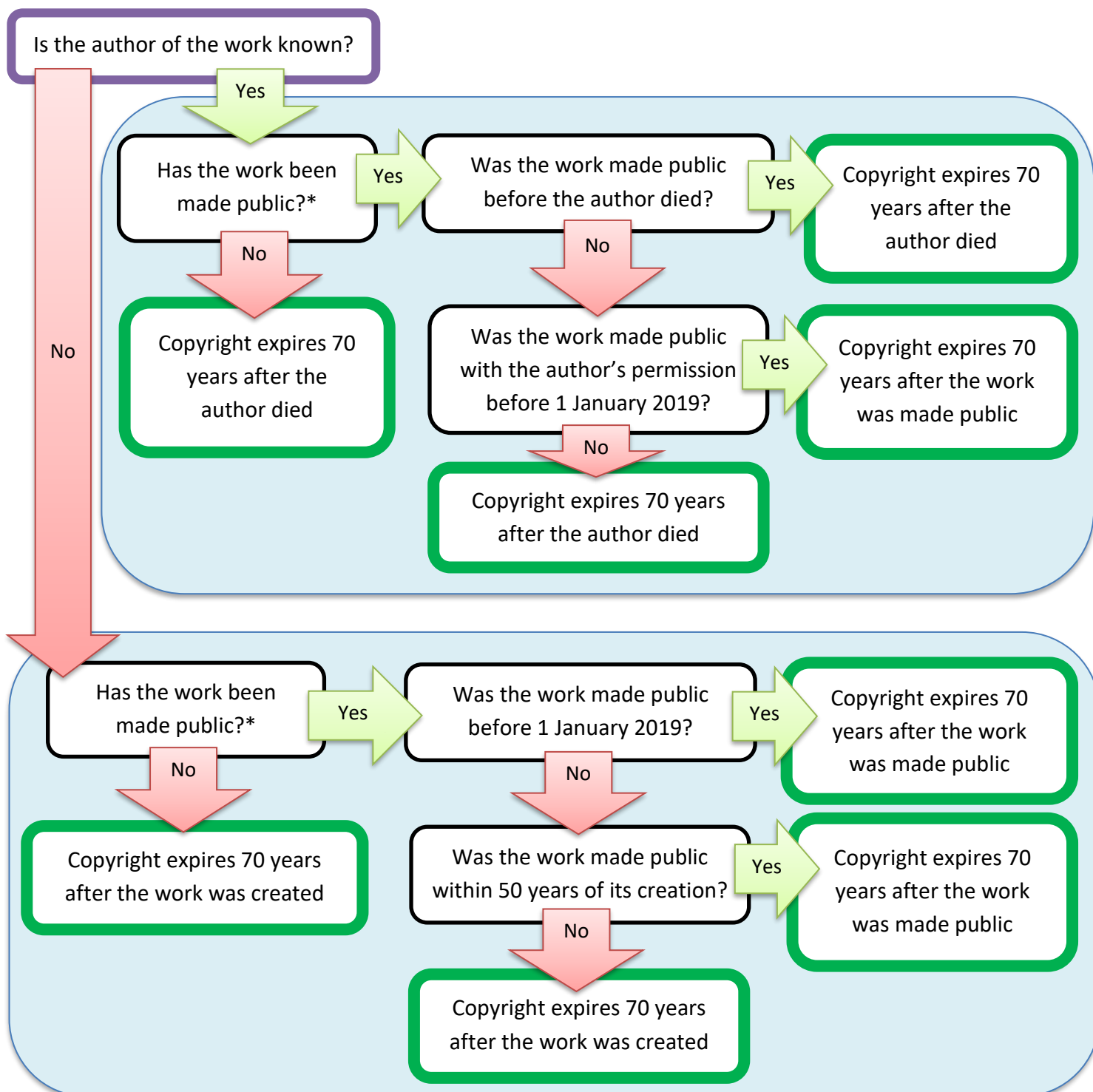


Determining the copyright term of works

The below sets out the general rules for determining copyright in literary, musical, dramatic or artistic works as of 1 January 2019. However, some older works, such as photographs, may fall outside these rules because of previous changes to copyright law. For a complete set of copyright term rules, see fact sheets at <http://libcopyright.org.au>.



* Important: A work is "made public" when it is communicated (eg posted online), published, or performed in public **with the author's permission**. Material that has simply been loaned, or has been shared illegally or under an exception (eg document delivery or s200AB) has not been "made public".

